

# CORRECT PRODUCT STORAGE



## LIQUIDS

All liquid products need to be stored indoors, away from extremes of heat, sunshine and cold.



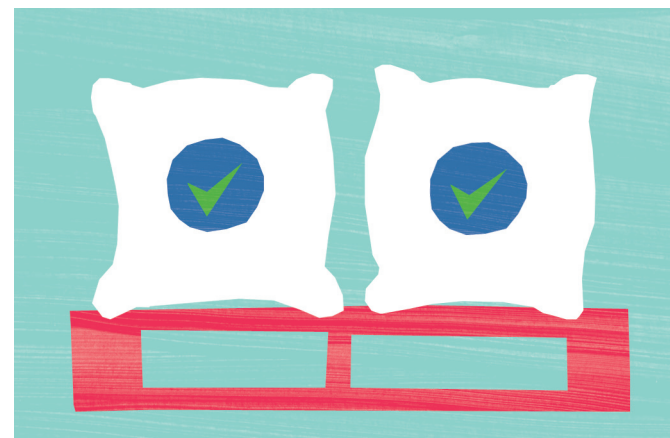
## TEMPERATURE

A range of 5-25°C is best. During winter, temperatures below 5°C should be avoided. Detergent liquids & starches can thicken & may be difficult to pump!



## BLEACH

Bleach liquid & powders suffer at higher temperatures e.g. Sodium Hypochlorite can lose 20% strength over time, if stored in temperatures over 21°C.



## DAMP

Dampness is the main hazard to powders. Store bags in a cool dry place, raised on pallets to avoid flood damage.

## PALLETS

Always leave product on pallets provided. Avoid storing on cold concrete floors in winter.

