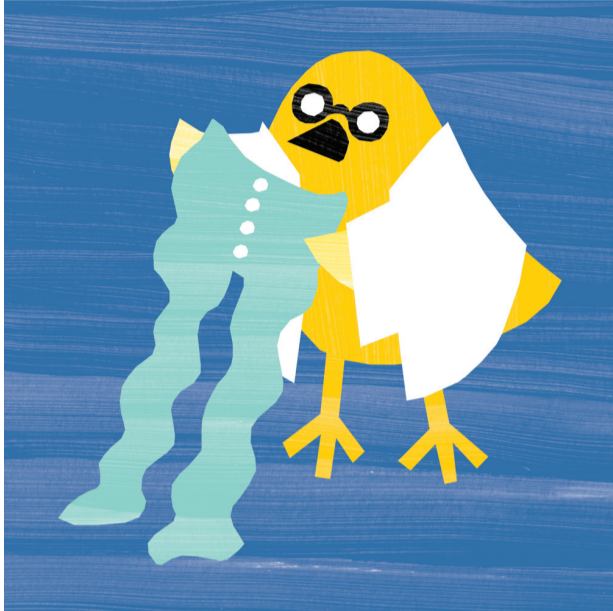




TROUBLESHOOTING STARCHING PROBLEMS



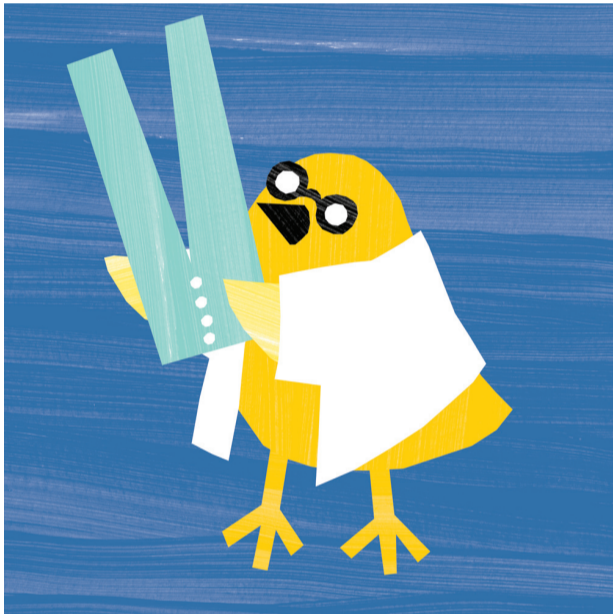
WORK TOO LIMP?

CAUSE

- Too little starch
- Too high dip on starch
- Temperature too low
- Starch rinse too short
- Machine overloaded
- Fabric very thin
- Over tumbling before ironing
- Work too dry before ironing
- Work too wet before ironing
- Calender too fast
- Calender too cold
- Wrong starch

SOLUTION

- Use 500g/50kg work in washer extractor or 1-2kg in tunnel
- Check for leaking inlet valves or dip indicator fault
- Increase temperature to optimum 40 °C
- Ensure 5 minutes in washer extractor
- Check loading levels
- Use more starch or reduce water dip level
- Reduce tumbling until optimum starching is achieved
- Don't leave barrow loads overnight to dry
- Increase extraction or reduce speed of calender
- Slow it down or warm up starch rinse to 40 °C
- Check steam pressure and temperature
- Call 01933681616 or mail hello@idealmanufacturing.com



WORK TOO STIFF?

CAUSE

- Too much starch used
- Synthetic starch in use

SOLUTION

- Reduce to correct level
- Take care, it's easy to overdose



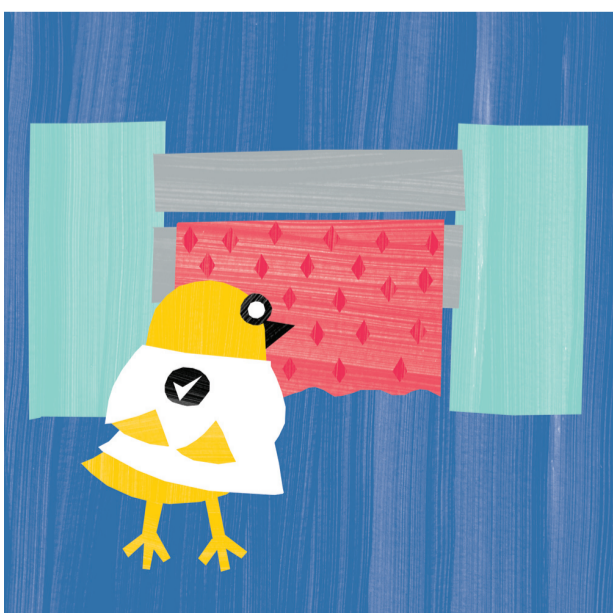
SURFACE STREAKS ON LINEN?

CAUSE

- Starch not penetrating
- Starch rinse too short
- Starch not creamed before use
- Water level too low
- Large grain unblended starch used

SOLUTION

- Use finer grain starch – we recommend Ideal Rice Starch
- Extend to 5 minutes
- Check dosing practice with operator
- Check dump valves, inlet valves and dip tube
- Use a well designed starch – we recommend Ideal Soft Starch



CALENDER LIP & BED DEPOSITS?

CAUSE

- Over starching
- Starch not penetrating
- No lubricant in starch
- Abrasive detergents causing lint

SOLUTION

- Check additions with operators
- Check starch rinse time
- Use Ideal Soft Starch or Ideal Premium Liquid Starch
- Call 01933681616 or mail hello@idealmanufacturing.com