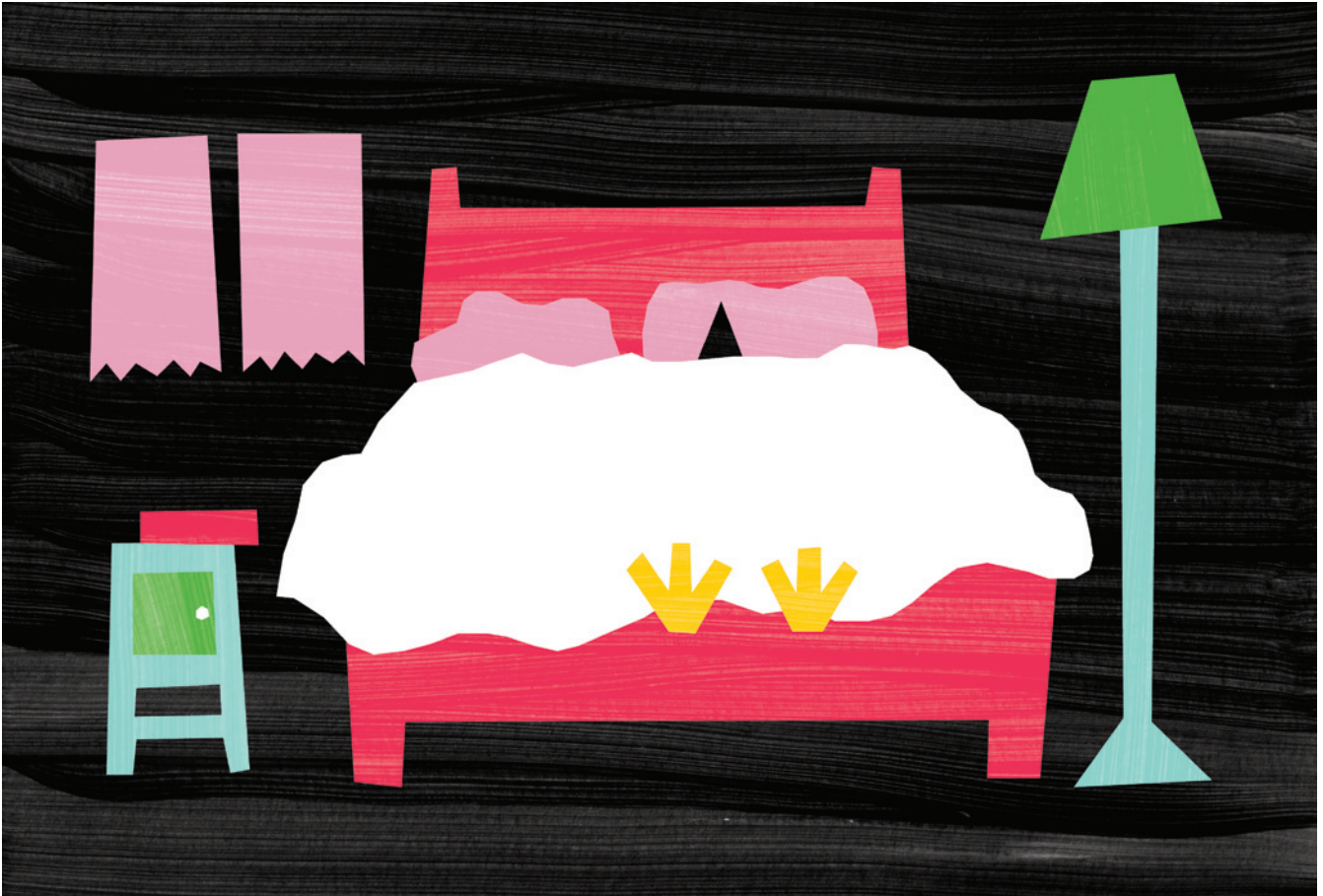


# WASH YOUR PROBLEM



## IRON

### 1- ITEM AFFECTED

Washing  
Whites

### 2- CAUSE

Could be associated with rust in steam lines (on a Monday morning), rust in pipework or rust in bore hole water.

### 3- SOLUTION

Avoid using mixed metal piping.  
Coat pipework with a silicate solution.  
If it's the bore hole water, install an iron treatment plant.  
As a temporary solution, use RR Sour (5ml/kg of linen) in the final rinse to avoid discolouration.

